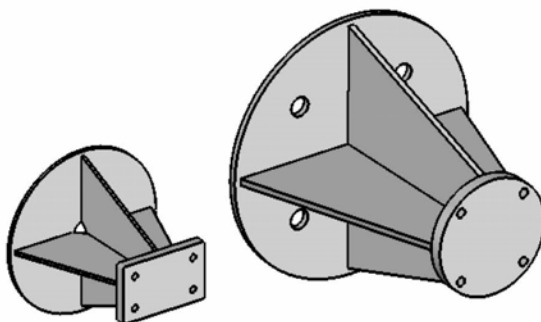




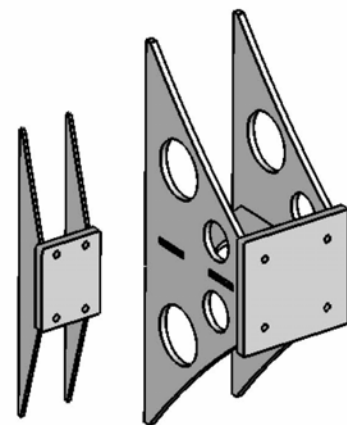
Weld-on Brackets Series ASB



- Fixing devices for pneumatic impactors and vibrators
- For Mounting at round and square containers
- The impulse will be spread over evenly
- Greatest possible protection of the weld



ASB R round



ASB G straight



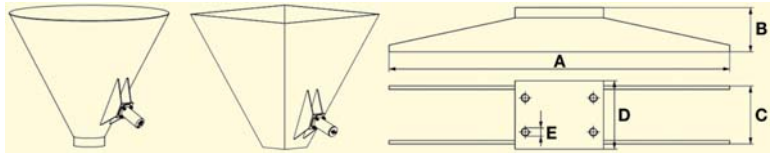
NetterVibration



**Weld-on Brackets
Series ASB**

**Weld-on Brackets straight
Series ASB G**

For round and square containers **without insulation**



Type	for Impactors	Dimensions [mm]					Material
		A	B	C	D	E	
ASB - G 190	PKL 190	350	46	38	40	M 8	Steel
ASB - G 190 S	PKL 190	350	46	38	40	M 8	Stainless Steel
ASB - G 450	PKL 450	450	60	60	80	M 12	Steel
ASB - G 450 S	PKL 450	450	60	60	80	M 12	Stainless Steel
ASB - G 740	PKL 740	450	65	85	100	M 12	Steel
ASB - G 740 S	PKL 740	450	65	85	100	M 12	Stainless Steel
ASB - G 740 AL	PKL 740	450	65	99	120	Ø 12,5	Aluminium
ASB - G 2100	PKL 2100	600	65	169	180	M 12	Steel
ASB - G 2100 S	PKL 2100	600	65	169	180	M 12	Stainless Steel
ASB - G-5000	PKL 5000	600	70	169	190	M 16	Steel
ASB - G-5000 S	PKL 5000	600	70	169	190	M 16	Stainless Steel

For round and square containers **with heat and sound insulation**



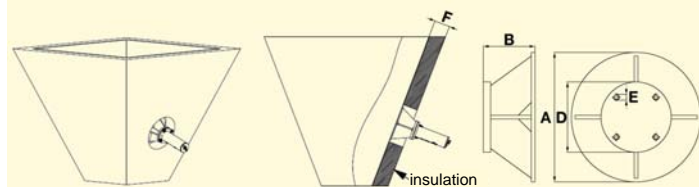
Type	For Impactors	Designation	Dimensions [mm]					Material	
			A	B	C	D	E		F
ASB - G 740	PKL 740	ASB - G 740-200	450	200	85	100	M 12	180	Steel
		ASB - G 740-250		250				230	
		ASB - G 740-300		300				280	
		ASB - G 740-350		350				330	
		ASB - G 740-400		400				380	
ASB - G 740 S	PKL 740	ASB - G 740 S-200	450	200	85	100	M 12	180	Stainless Steel
		ASB - G 740 S-250		250				230	
		ASB - G 740 S-300		300				280	
		ASB - G 740 S-350		350				330	
		ASB - G 740 S-400		400				380	
ASB - G 2100	PKL 2100	ASB - G 2100-200	600	200	160	180	M 12	180	Steel
		ASB - G 2100-250		250				230	
		ASB - G 2100-300		300				280	
		ASB - G 2100-350		350				330	
		ASB - G 2100-400		400				380	
ASB - G 2100 S	PKL 2100	ASB - G 2100 S-200	600	200	160	180	M 12	180	Stainless Steel
		ASB - G 2100 S-250		250				230	
		ASB - G 2100 S-300		300				280	
		ASB - G 2100 S-350		350				330	
		ASB - G 2100 S-400		400				380	
ASB - G-5000	PKL 5000	ASB - G-5000-200	600	200	169	190	M 16	180	Steel
		ASB - G-5000-250		250				230	
		ASB - G-5000-300		300				280	
		ASB - G-5000-350		350				330	
		ASB - G-5000-400		400				380	
ASB - G-5000 S	PKL 5000	ASB - G-5000 S-200	600	200	169	190	M 16	180	Stainless Steel
		ASB - G-5000 S-250		250				230	
		ASB - G-5000 S-300		300				280	
		ASB - G-5000 S-350		350				330	
		ASB - G-5000 S-400		400				380	

Weld-on Brackets Series ASB



Weld-on Brackets round Series ASB R

For square containers with heat and sound insulation



Type	For Impactors	Designation	Dimensions [mm]					Material
			A	B	D	E	F	
ASB – R 740	PKL 740	ASB – R 740-200	250	200	160	M 12	180	Steel
		ASB – R 740-250	250	250			230	
		ASB – R 740-300	350	300			280	
		ASB – R 740-350	350	350			330	
		ASB – R 740-400	350	400			380	
		ASB – R 740-450	450	450			430	
		ASB – R 740-500	450	500			480	
ASB – R 740 S	PKL 740	ASB – R 740 S-200	250	200	160	M 12	180	Stainless Steel
		ASB – R 740 S-250	250	250			230	
		ASB – R 740 S-300	350	300			280	
		ASB – R 740 S-350	350	350			330	
		ASB – R 740 S-400	350	400			380	
		ASB – R 740 S-450	450	450			430	
		ASB – R 740 S-500	450	500			480	
ASB – R 2100	PKL 2100	ASB – R 2100-200	300	200	180	M 12	180	Steel
		ASB – R 2100-250	300	250			230	
		ASB – R 2100-300	400	300			280	
		ASB – R 2100-350	400	350			330	
		ASB – R 2100-400	400	400			380	
		ASB – R 2100-450	500	450			430	
		ASB – R 2100-500	500	500			480	
ASB – R 2100 S	PKL 2100	ASB – R 2100 S-200	300	200	180	M 12	180	Stainless Steel
		ASB – R 2100 S-250	300	250			230	
		ASB – R 2100 S-300	400	300			280	
		ASB – R 2100 S-350	400	350			330	
		ASB – R 2100 S-400	400	400			380	
		ASB – R 2100 S-450	500	450			430	
		ASB – R 2100 S-500	500	500			480	
ASB – R 5000	PKL 5000	ASB – R 5000-200	350	200	180	M 16	180	Steel
		ASB – R 5000-250	350	250			230	
		ASB – R 5000-300	400	300			280	
		ASB – R 5000-350	400	350			330	
		ASB – R 5000-400	450	400			380	
		ASB – R 5000-450	450	450			430	
		ASB – R 5000-500	500	500			480	
ASB – R 5000 S	PKL 5000	ASB – R 5000 S-200	350	200	180	M 16	180	Stainless Steel
		ASB – R 5000 S-250	350	250			230	
		ASB – R 5000 S-300	400	300			280	
		ASB – R 5000 S-350	400	350			330	
		ASB – R 5000 S-400	450	400			380	
		ASB – R 5000 S-450	450	450			430	
		ASB – R 5000 S-500	500	500			480	



NetterVibration



Weld-on Brackets Series ASB

Weld-on Brackets Series ASB G

For Vibrators

Type	for Vibrators	Dimensions [mm]					Material
		A	B	C	D	E	
ASB - G	PKL 190	220	40	50	—	M 8	steel
	NCT 3, NCT 4						
	NTS 180, NTS 250, NTS 350						
ASB - G S	PKL 190	220	40	50	—	M 8	stainless steel
	NCB 1, NCB2, NCB 3, NCB 5						
	NCT 3, NCT 4						
ASB - G NCB	NCR 3	400	60	80	—	—	stainless steel
	NTS 180, NTS 250, NTS 350						
ASB - G NTP 25 S	NCB 3, NCB 4	220	48	50	60	M 6	stainless steel
ASB - G NTP 32	NTP 25	450	65	75	85	M 10	steel
		220	150	—	-75	M 10	
ASB - G NTP 32 S	NTP 32	450	65	75	85	M 10	stainless steel
		220	150	—	-75	M 10	
ASB - G NTP 48	NTP 48	600	65	86	100	M 12	steel
ASB - G NTP 48 S	NTP 48	600	65	86	100	M 12	stainless steel
ASB - G NTS	NTS 50/01, NTS 75/01	450	60	100	110	M 8	steel
ASB - G NTS	NTS 50/04	300	200	160	180	M 12	steel
		550	60	116	125	M 8	
ASB - G NTS S	NTS 50/01, NTS 75/01	450	60	100	110	M 8	stainless steel
		450	65	106	150	M 12	

Applications:

The Weld-on Brackets series ASB are secure fastening devices for Netter pneumatic impactors series PKL.

Due to the special design of the Weld-on Brackets, the impulse of the PKL will be spread over evenly across the container wall for loosening the bulk materials, with the greatest possible protection of the weld.

Weld-on brackets are welded directly to the container walls.

PKL impactors will be screwed on plane stiffening profiles, weld-on brackets or weld-on plates ($\pm 0,1$ mm planeness).

Welding plates are welded on stiffening profiles or previously mounted on intermediate layers (1.5 times the plate thickness of the container).

The assembly of the impactors is then made with NBS kits on these devices.

NetterVibration offers the accessories required for the mounting, installation, control and monitoring of vibrators and impactors.

Netter provides solutions.
Consult our experienced application technicians.

Netter GmbH

Fritz-Lenges-Str. 3
55252 Mainz-Kastel

- Germany
- Switzerland
- Poland
- Spain
- Australia

www.**NetterVibration**.com
info@**NetterVibration**.com