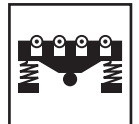
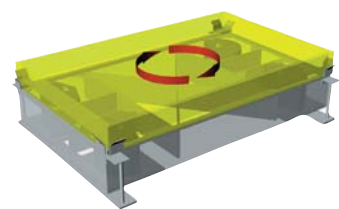
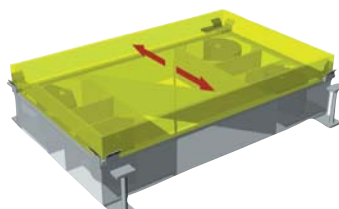
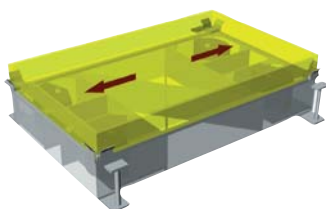


42

Shaker Station for Concrete Compaction Series *GyroShake*

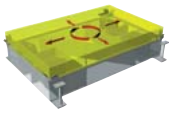


- System for silent compaction, noise level below 70 dB(A)
- Nearly pore-free exposed concrete
- Regulation of amplitude during operation
- Regulation of frequency during operation
- Can be integrated in pallet circulation systems
- Shaker station size as per customer's requirement

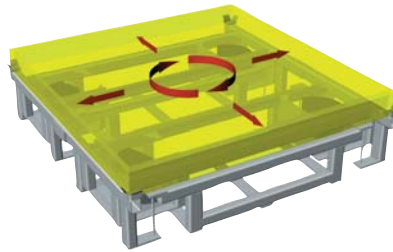




NetterVibration



Shaker Station Series GyroShake



Technical data and dimensions as per customer's requirements.

Applications

Shaker stations series **GyroShake** are used for the compaction of concrete in pre-cast part manufacturing plants. The concrete for e.g. panel ceilings, garage floors, double-wall panels or railway sleepers is silently compacted in moulds, with operational noise emission levels of below 70 dB(A). The system impresses with its high compaction performance, practically pore-free exposed concrete and short cycle times at < 70 dB(A). It can be integrated in pallet circulation systems and controlled by their master computer. The stations are individually assembled to meet the customer's needs.

Design and Working Principle

The station consists of a control and a base frame on which a free-swinging frame is fixed by using a patented suspension system. This guarantees a loss-free, defined deflection of the frame. At least 4 electric unbalance motors are placed on the frame. The selection of the parameters for the X-, Y- (longitudinal and lateral directions) and an additional circular motion (Z-motion) is made via the electronic control. The unbalance motors can be regulated within a frequency range of 0 –7 Hz.

Netter provides solutions.
Consult our experienced application technicians.

Netter GmbH
Fritz-Lenges-Str. 3
55252 Mainz-Kastel

- Germany
- Switzerland
- Poland
- Spain
- Australia

www.**Netter**Vibration.com
info@**Netter**Vibration.com