



Netter Electric Internal Vibrators for slip form pavers Series NCX M



- Highest compaction rate
- Interchangeable elements, very service friendly
- Straight, elbow shaped and horizontal T-version available
- T- vibrator with 2 different unbalances (CC version)
- 110 Volt, 200 Hz
- Optional thermal trips available



NCX M straight



NCX M elbow shaped



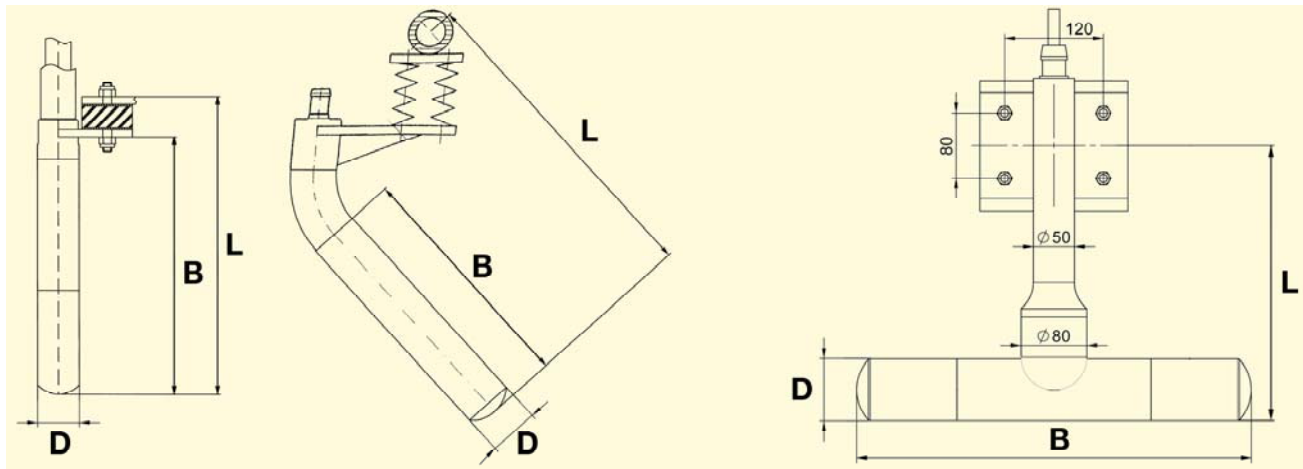
NCX M horizontal



Netter Electric Internal Vibrators Series NCX M

	Type	Head diameter D [mm]	Total length L [mm]	Head length B [mm]	Head weight [kg]	Total weight [kg]	Nominal frequency [min ⁻¹]	Centrifugal force [N]	Influenced zone [cm]	Current consumption [A]
straight	NCX M 660G	66	470	410	11,0	14,0	12.000	6.000	110	9,0
elbow	NCX M 660	66	490	390	11,0	20,0	12.000	6.000	110	9,0
	NCX M 760	76	640	480	16,5	28,0	12.000	9.000	150	11,0
horizontal	NCX M 760 T 4,0	76	343	480	20,0	30,0	12.000	4.000	150	11,0
	NCX M 760 T 5,6	76	343	480	20,0	30,0	12.000	5.600	150	11,0
	NCX M 760 T 7,2	76	343	480	20,0	30,0	12.000	7.200	150	11,0
	NCX M 760 T CC	76	343	480	20,0	30,0	12.000	5.600/ 7.200	150	11,0

Standard version: 110 V, protective hose 1,5 m, cable 6 m, CEE connector. Other voltages, hose and cable lengths on request.



NCX M straight

NCX M elbow shaped

NCX M T horizontal

Applications:

Series NCX M electric internal vibrators are mainly used in concrete slip form pavers. Compared to conventional vibrators the enormously increased centrifugal force permits a higher compaction rate. The resulting optimum removal of entrapped air fulfills the requirements of modern concrete technology.

Design and Function:

The modular design makes these vibrators very easy to service. For mounting standard tools can be used.

The vibrators can be fitted optionally with thermal trips. These will prevent breakdowns from overheating.

The special feature of the NCX M T CC is that it can be operated in both rotational directions using an appropriate control. When the NCX M T CC rotates in one direction, it works with a centrifugal force of 7.2 kN. Upon change of the rotational direction the unbalances shift relative to each other, so that the vibrator works with a centrifugal force of only 5.6 kN.

Nominal voltage / Nominal frequency:
110 V, 200 Hz

NetterVibration supplies the suitable accessories for mounting, installation, control and monitoring of vibrators and impactors.

Netter provides solutions.
Consult our experienced application technicians.

Netter GmbH

Germany

Fritz-Ullmann-Str. 9
55252 Mainz-Kastel
Tel. +49 6134 2901-0
Fax +49 6134 2901-33

Switzerland

Erlenweg 4
4310 Rheinfelden
Tel. +41 61 8316200
Fax +41 61 8311291

Poland

Al. W. Korfantego 195/17
40-153 Katowice
Tel. +48 32 2050947
Fax +48 32 2051572

www.**NetterVibration**.com
Info@**NetterVibration**.com